

ZODIAC

EQUIPMENT

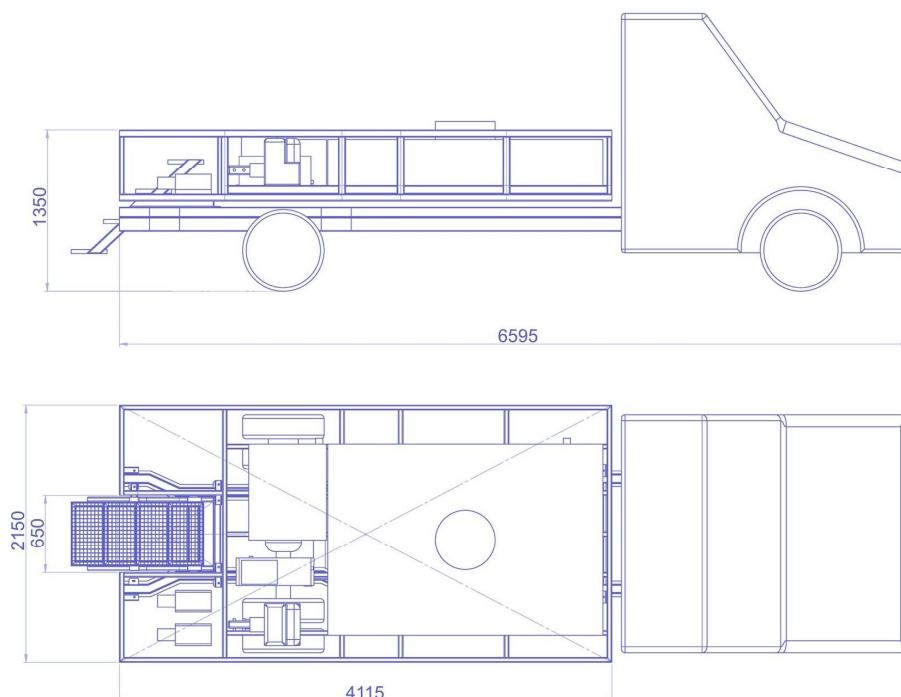
POTABLE WATER TRUCK PWT1820

A suitable lorry chassis is chosen and offered to the customer according to the required size of the tank, superstructure equipment, cabin equipment and kind of drive unit. The aggregates of the superstructure are driven by PTO. The superstructure frame is made of galvanised and painted hollow sections. It is covered with a galvanised and painted sheet. Tanks are equipped with a level gauge and an inspection aperture for easy cleaning, disinfection and inspection. For filling, it is equipped with a quick-acting "C" coupling and an overflow air-outlet. The water is pumped into the airplane through a filter. The superstructure is thermally insulated with expanded polystyrene.



Potable water tank (litres)	Used water tank (litres)	Pump capacity (litres/min)	Superstructure weight (kg)
1800	200	90	1250

Tanks quantity and their volume can be modified according to customer requirements

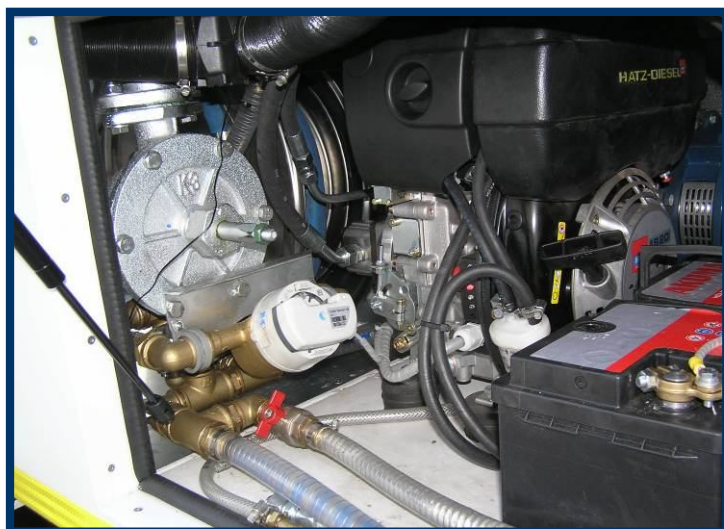


This product meets the EN 12312-12 standard

Control panels on rear side of superstructure.



Steps for easy access to the top of superstructure with bottom part removable for transport on public roads.



Stainless tubing, fittings and couplers.



The top wall with manholes with selectable diameter for tank's cleaning and inspecting is covered with aluminium sheet with slip-resistant treatment.



Optional equipment

- Diesel or petrol engine
- Battery charger
- Temperature measurement
- Independent Webasto heating system
- Automatic hose reel



ZODIAC EQUIPMENT

POTABLE WATER TRUCK
PWT1820

Optional versions

All dimensions can be changed on customer demand.



Ladder or lifting platform.



Superstructure for selectable truck chassis.

