

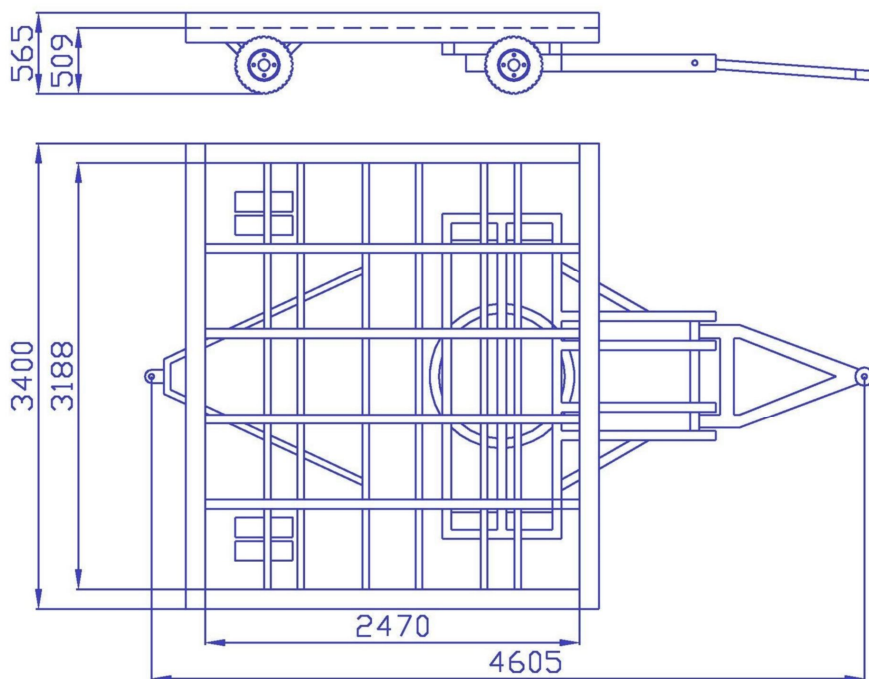
This container and pallet trailer has been designed in close co-operation with local handling companies and airlines. It offers a long-lasting reliability, easy operation and low maintenance costs.

- Chassis made out of welded steel profiles
- Heavy duty freight pallet dolly for transporting airline pallets and containers
- Suitable for standard pallets 125" x 96", 125" x 88", 108" x 88" and containers LD-7, LD-9, LD-29, LD-26, LD-8, LD-6, LD-11, 2x LD-1/LD-3, (other stops available)
- ULD stops manually operated by handles are situated on both sides of the trailer
- Hot-dip galvanized



Loading platform size (mm)	Payload (kg)	Weight (kg)	Max. towing speed (km)
3180 x 2470	7000	1060	25

Platform size and its payload can be modified according to customer requirements



This product meets the EN 12312-11 standard

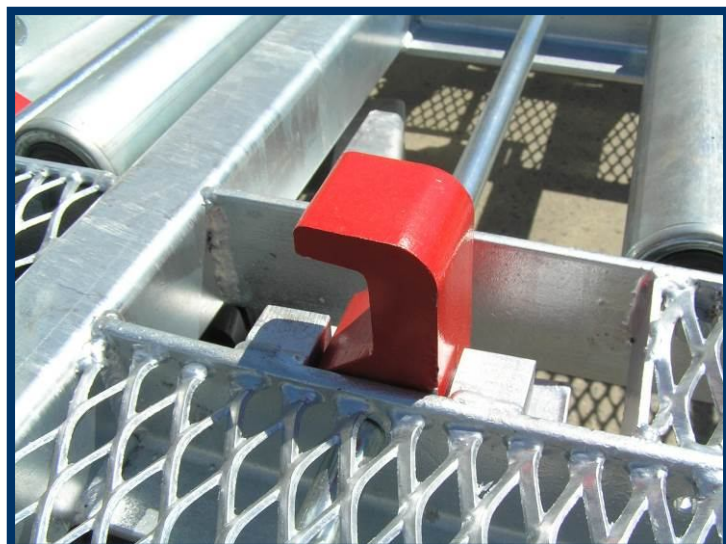
ZODIAC EQUIPMENT

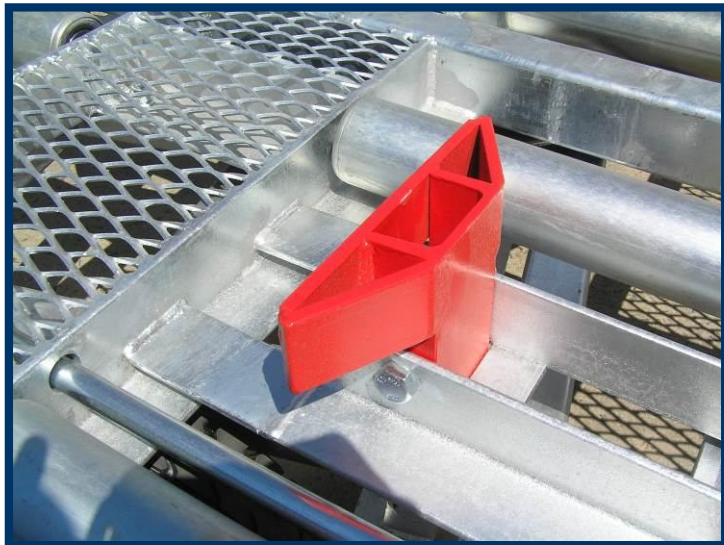
CONTAINER AND PALLET TRAILER PCK 7000

The trailer is equipped with a parking brake actuated by lifting and locking the drawbar in the upright position.



ULD stops manually operated by handles situated on both sides of the trailer.





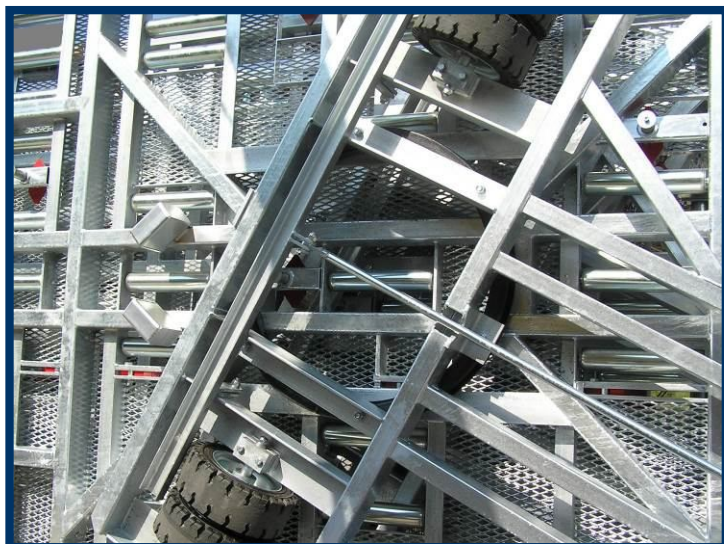
Cargo-rollers in 4 lines.



8x wheels with super elastic solid rubber tyres.



Front axle with turntable steering, rear axle is fixed.





E-type manual
spring-loaded tow hitch.

Automatic coupling as
option available.



Transport arrangement

Up to 16 pieces can be transported by tandem vehicle.

